

KELCO

Product Selection Guide

Flow Switches

In selecting one of our Kelco flow switches, you should identify the following factors in your application or system to ease the selection process. Factors include: flow rate, flow material, pipe material, pipe size, liquid temperature, maximum pressure, if there are any solid or semi-solid materials in the pipe, how the switch will be mounted (i.e. vertically or horizontally), if there is any turbulence in the pipe, or if there are bends in the pipework near where the switch will be installed.

All Kelco switches are suitable for use with clean water. For all other fluids and chemicals, please check the chemical compatibility with the materials in our switches.

If your flow rate is less than 30L/min



**CR22
C15 Series
MF20 Series
P20 Series**



If your flow rate is less than 100L/min



**C25 Series
P25 Series
UB25 Series**



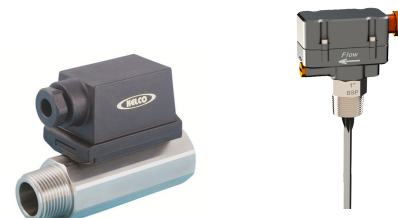
If you have metal pipework

We recommend switches with a metal process connection



**C25 Series
UB25 Series
F Series*
TW Series***

*With stainless steel connection



If there are solid or semi-solid materials in the pipe, or if you have a high flow rate



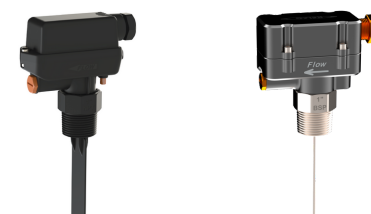
**TW Series
TWM Series**



If your pipework is 1" (25mm) or larger



**F Series
FM Series
TW Series
TWM Series**



Please refer to our website www.Kelco.com.au for further product information.

This is only to be used as a general guide to aid product selection. If you have any questions regarding our switches, please contact us via Sales@Kelco.com.au or call +61 (02) 9905 6425.

KELCO

Product Selection Guide

Flow Switches & Pump Control

Prior to purchasing one of the below switches, please check the switch data sheet and installation guide to ensure the product can be set to operate as required.

**For a time delay flow switch
paddle flow switch**



**F29 MK3 Series
TW29 MK3 Series**



**For a flow and pressure pump
controller**



F60 MK3 Series



For a pressure switch



E30 MK2 Series



For intelligent pump protection

Suitable for many dairy and irrigation systems



IPG20 MK3 Series



Please refer to our website www.Kelco.com.au for further product information.

This is only to be used as a general guide to aid product selection. If you have any questions regarding our switches, please contact us via Sales@Kelco.com.au or call +61 (02) 9905 6425.

KELCO

Product Selection Guide

Level & Float Switches

If you need a single-point level switch



D40



If you need a two-point level switch



D50

If you need a level switch with side entry for a tank or pit



**L Series
LM Series**



If you need a float switch with a small switching differential



K Series

Cable weights sold separately

K Series



Q Series



If you need a float switch with a wider switching differential



Q Series

Cable weights sold separately

If you need a float switch for use with diesel and oil



KU Series

Cable weights sold separately

KU Series



If you need a highly accurate level sensor



KP Series

Cable weights sold separately

KP Series



Please refer to our website www.Kelco.com.au for further product information.

This is only to be used as a general guide to aid product selection. If you have any questions regarding our switches, please contact us via Sales@Kelco.com.au or call +61 (02) 9905 6425.